

## Introduction

Thank you for your interest in Artist Residencies at artsdepot.

Before you submit your application, please read the information included here carefully. These notes are intended to help you make the most of your application. Each year, we invite applications from artists and companies who wish to explore exciting new ideas in our Creation Space.

As part of our Artist Development offer **Development Depot**, we offer three strands of support to artists / creatives. The graphic below explains what support is given in each strand. These strands are designed to be used together to offer a comprehensive support package for artists in 2024/25.



For any questions or to talk to us more about the support we can offer, please contact our Artist Development Producer Zoe via [artistdevelopment@artsdepot.co.uk](mailto:artistdevelopment@artsdepot.co.uk)

## About artsdepot

artsdepot is a multi-art form venue with two theatres, a gallery, dance studio, drama space and an art room. We are also home to undergraduate dance college, London Studio Centre. We present a high-quality performance and participation programme across all art forms for all ages.

artsdepot has supported artist residencies in our Creation Space since 2014. We are proud to have collaborated with so many emerging, mid-career and established artists across different art forms to play a part in supporting the development of new work.

The core values that underpin artsdepot's work are to be:

- **Inclusive** - We reflect and actively speak to and involve our communities to make us accessible to the people of Barnet and beyond
- **Creative** – We value everyone's creative contribution on their own terms
- **Environmentally Aware** – We are working towards environmental sustainability and actively consider the environmental impact we have and seek to reduce it
- **Resilient** – We face challenges with the flexibility to adapt to new situations
- **Collaborative** – We listen, share and reflect, and try to help when we can
- **Respectful** – We treat each other with respect
- **Accountable** - We recognise our mistakes, learn and take responsibility for how our actions impact others
- **Uplifting** – We facilitate and share uplifting experiences for staff and our communities

## artsdepot 24/25 Residency Programme

artsdepot's Artist Residency programme is now open for applications!

Successful applicants will be given space, time and seed funding to develop a project at artsdepot. Artists and companies on our residency programme will become members of our artist alumni network and will be offered a free place on all of our artist development workshops with industry professionals throughout the year.

### The Space

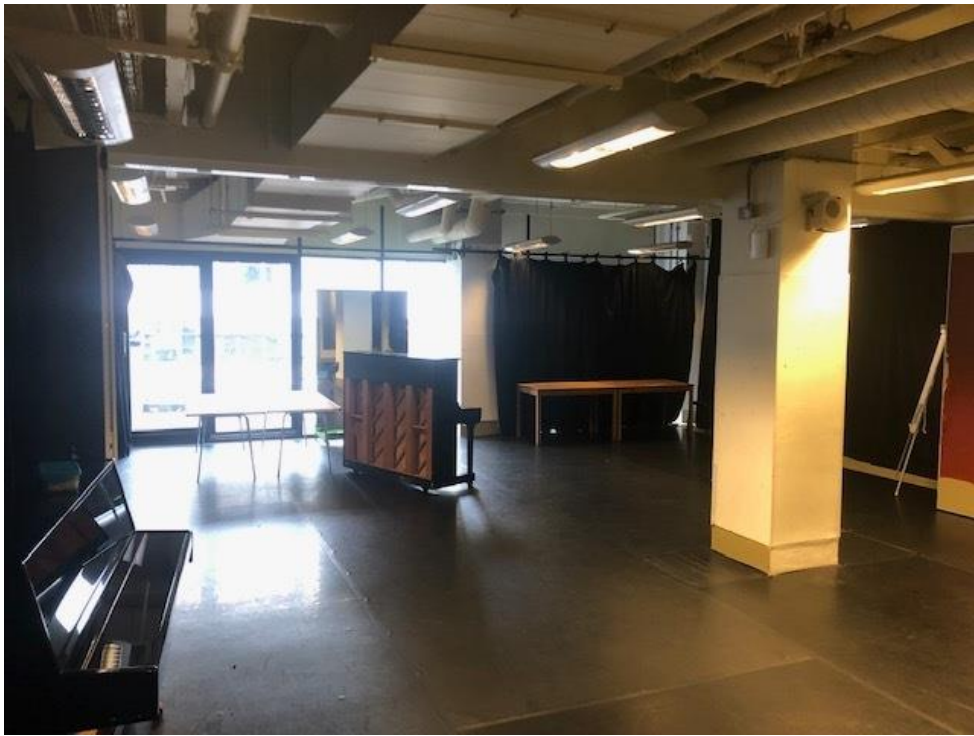
Our Creation Space is the home of artsdepot's artist development programme. It is a low-tech room with limited resources. This is not a purpose-built studio but is a lovely open and light space.

**Floor** – This is not a sprung floor but covered concrete. Please note, some dance work may not be suitable.

**Ceiling Height** – 2.4 metres (it is a ceiling with exposed pipe works)

**Rigging** - There are no rigging points within the space.

**Technical** – There is a sound system within the space and basic lighting, both controlled by a desk. All other technical equipment has to run from 13amp plug sockets and must be PAT tested.



## Who Can Apply

This year, we are looking for 8 artists or companies to join our 24/25 residency programme. Artists and companies at any stage in their career are welcome to apply. Whether you're emerging, mid-career or established, if you have a new idea you're keen to explore, we want to hear from you.

### Young Artist's Residency

We are designating one spot for an emerging artist or company aged between 18 – 25. This residency will be given more mentoring support from the producing team at artsdepot during their residency period, as well as a chance to work on their application with a member of our team prior to submission.

### Tsitsit Sponsored Festival Residency

We are delighted to be continuing our collaboration with the Tsitsit Festival ([www.tsitsitfringe.org](http://www.tsitsitfringe.org)) who will be supporting three artist residencies.

Tsitsit are keen to help develop new works that reflect contemporary and historic Jewish identities and cultures. They are particularly interested in work that takes its starting point as the Diaspora British Jewish experience, but their overall approach to work they want to feature is very broad, hence the strapline: 'If its Jewish enough for you, its Jewish enough for us'.

### Barnet-based Artist Residency

We will also be designating one spot to an artist who is based or works in the Borough of Barnet.

We welcome applications from those underrepresented in the arts and creative sector. We particularly encourage applications from performance-makers from Global Majority or mixed heritage backgrounds, LGBTQ+ performance-makers, D/deaf performance-makers, disabled performance-makers and performance-makers from working class backgrounds.

## The Residency

We're committing to supporting the development of the projects on our residency programme over a 12-month period, so the support listed below can be spread across that time.

Residency Artists will receive:

- **Rehearsal Space:** Artists can apply for up to 4 weeks of rehearsal space in our Creation Space as support in kind to develop their artistic idea. This can be flexible around the needs of your project. For example, you can have your first week with us to focus on script development and funding applications, then return 6 months later to rehearse for 2 weeks, then return a month later to focus on the project's next steps.
- **Work-in-progress/Scratch Performance:** Artists will have the chance to present their project, if they wish, at a Residency scratch night at the end of this cycle. Please note, there is no obligation to host any sharings or workshops when applying for the residency programme
- **£1,000 seed funding**
- **Mentorship/support from the artsdepot team:** Tailored to the needs of your project, this may be in the form of a letter of support for an Arts Council application, advice on approaching venues for programming or connecting artists with local communities around artsdepot for participatory events
- **Access to free hot desking space and use of our Green Room:** This can be booked for free for production meetings or to carry out small castings
- **Professional Development Workshops:** Free to attend all artsdepot's Artist Development workshops throughout 24/25 academic year
- **Networking:** Artists will be offered opportunities to meet with the 24/25 cohort as well as connect with previous residency artists and their work via an alumni newsletter

## Application Process

### Artist Residency Information Session

We are holding an online information session for applications to find out more about the programme and ask any questions on Tuesday 9 July at 6pm. For more information and to sign up: <https://www.artsdepot.co.uk/project/artist-residency-information-session-online/>

If you're unable to attend but would still like to be in contact with the Participation & Programming Team about any questions you have, please email Zoe at [artistdevelopment@artsdepot.co.uk](mailto:artistdevelopment@artsdepot.co.uk)

**To apply, please complete our online Application Form**

<https://forms.office.com/e/NAa0XLMdxP>

To look at all the application questions in the application form ahead of submitting please access a word doc version on this page of our website:

<https://www.artsdepot.co.uk/project/applications-open-for-the-2024-25-artist-residency-programme/>

**OR**

Send us a video around 5 - 8 minutes long to [artistdevelopment@artsdepot.co.uk](mailto:artistdevelopment@artsdepot.co.uk) If you wish to submit your application in this way, we ask you to include:

- An Introduction: who you are and what your art form is
- Your idea: how you will use the time and next steps for the project
- An indication of how money will be spent
- Current Creative Team members
- Preferred month/s to do your residency (between Sept 24 – June 25)

We also ask everyone to complete an **Equal Opportunities form**

<https://forms.office.com/e/QkSiWtTpCd>

This information helps us to understand who is applying for our opportunities. The information you provide will only be used to check how effectively our procedures are working.

Video submissions should be sent to [artistdevelopment@artsdepot.co.uk](mailto:artistdevelopment@artsdepot.co.uk)

3 - 4 people will read every application independently before coming together to discuss applications. Due to the number of expected submissions, we can only offer brief written feedback to unsuccessful applicants on request.

## **Application Timeline**

**Tuesday 9 July at 6 - 7pm** Online Q&A Session on Artist Residency Programme and Application process, led by the Programming & Participation Team

Submissions open on **Wednesday 3 July**

Submissions Close on **Friday 26 July at 10am**

artsdepot team will review applications **w/c 29 July**

Artists will be informed of the status of their application **Friday 2 August**

Interview Questions sent out to Artists **Monday 12 August**

Interviews w/c **Monday 12 August**

Offers made to Artists **Monday 19 August**

Residency Dates **September 2024 - July 2025**

## Access Support

We want everyone to be able to apply for this opportunity. We're committed to being as accessible as possible at every stage of this process.

If you need access support, there are several ways we can support you, including (but not limited to):

- Providing our guidance in another format such as a word document, BSL and Large Print
- Paying for a support worker
- Accepting a video submission in BSL

Please get in touch if you need access support to apply for this via [artistdevelopment@artsdepot.co.uk](mailto:artistdevelopment@artsdepot.co.uk) or call [020 8369 5454](tel:02083695454) (even if we haven't stated the form of support above) or to let us know about any barriers you might experience.

## Child Support

We understand that artists might have parenting responsibilities so understand if you need your child to be present for your interview or during a residency.

Please get in touch with us if you need to access any additional support via [artistdevelopment@artsdepot.co.uk](mailto:artistdevelopment@artsdepot.co.uk)

If you have any other questions, please email Zoe via [artistdevelopment@artsdepot.co.uk](mailto:artistdevelopment@artsdepot.co.uk)