

Pentland Theatre

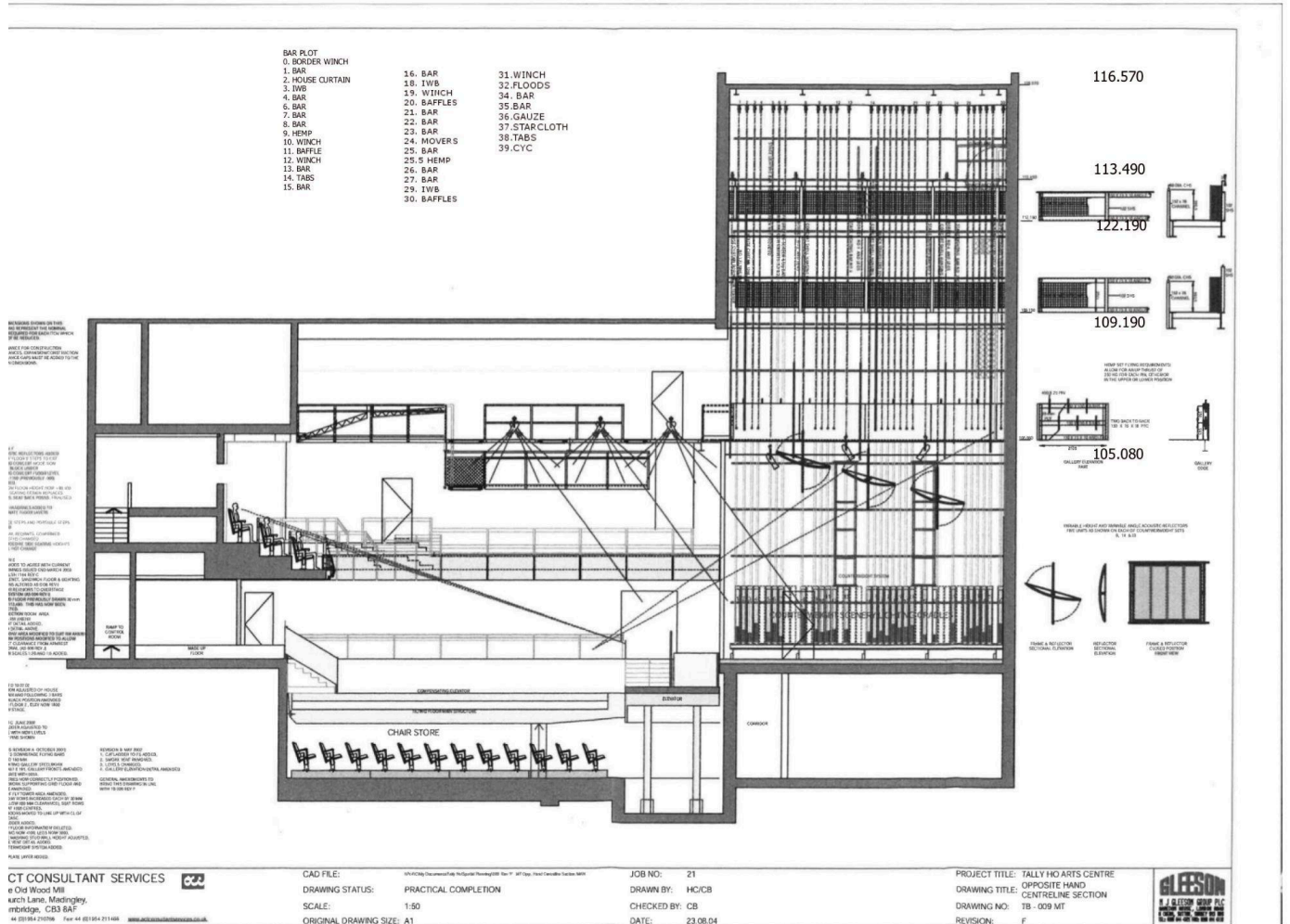
Technical Specification - Updated January 2024



Capacities Based on Layout

Full Seated Total	395	Flat Floor Standing	300
Stalls Seated	264	Flat Floor Banqueting	200
Stalls Slips Seated	48		
Balcony Seated	131		
Wheelchair positions	4 (2 Stalls, 2 Balcony)		

General Overview



Dimensions

Proscenium fixed opening	13.8m
Proscenium adjustable opening	10.8m
Wings Clear	2.4m left and right
Stage Depth	9.15m
Forestage depth	3.05m
Forestage width	10m
Forestage (orchestra pit)	1.8m below stage
Height of Proscenium	6.95m
Stage height	0.88m
Stage – underside of fly floor	6.85m
Stage – grid	15.13m
Auditorium – underside of FOH grid	7.82m
Projection point – cyclorama	22.96m



Adaptable Floor

The Pentland Theatre has **adaptable flooring** in the stalls level allowing different layouts of the space with the seating able to be stored under the floor. The Stalls can be **raked, flat and flush** with the stage, or **flat and lowered** up to 1.1m below stage level. We also have a thrust stage forestage elevator which can be lowered for additional layout configuration.

The adaptable floor area is 10.9m x 12.1m

The forestage elevator is 3m x 9.975m

Orchestra level on the forestage elevator is set at 1.8m below stage



Fly plot - Pentland Theatre

Items in red cannot be moved without prior agreement

Bar	Type	General Rig Position	Distance from pros (approx)
0	Winch	House teasers	0
1	Counterweight	Hard Masking	0.1m
2	Counterweight	House Curtains	0.4m
3	Counterweight	LX1	0.63m
4	Counterweight		0.83m
5	Hemp	DO NOT USE	
6	Counterweight	Legs	1.21m
7	Counterweight		1.42m
8	Counterweight		1.63m
9	Hemp	DO NOT USE	
10	Winch		2.06m
11	Counterweight	Baffle & Border	2.26m
12	Hemp	DO NOT USE	
13	Counterweight		2.66m
14	Counterweight		2.87m
15	Counterweight	Mid Stage Travellers	3.07m
16	Counterweight		3.26m
17	Hemp	DO NOT USE	
18	Counterweight	LX2	3.66m
19	Winch		4.05m
20	Counterweight	Baffle & Border	4.44m
21	Counterweight	Legs	4.61m
22	Counterweight		4.82m
23	Counterweight		5.04m
24	Counterweight		5.24m
25	Counterweight	Moving lights	5.43m
26	Counterweight	Legs	5.63m
27	Counterweight		5.82m
28	Hemp	DO NOT USE	
29	Counterweight	LX3	6.24m
30	Counterweight	Baffle & Border	6.63m
31	Winch		6.92m
32	Counterweight	LX4	7.16m
33	Hemp	DO NOT USE	
34	Counterweight		7.57m
35	Counterweight		7.76m
36	Counterweight	Black Guaze	7.96m
37	Counterweight	Star Cloth	8.17m
38	Counterweight	Up Stage Travellers	8.34m
39	Counterweight	Cyclorama	8.66m

* Bar 31 Winch currently OOA awaiting repair

Overstage

30 sets of single purchase counterweight fly bars, operated from fly gallery stage right and loaded from two galleries.

Capacity 600kg each bar.

Bar length 13.6m on six lines.

4 x sets of 6-line pile-on masking, winch operated

6 x 4-line hemp sets, manually operated

Adjustable sound reflector panels, or Baffles, on counterweight sets 11, 20 and 30.

Full set of masking drapes including house curtain, mid stage travellers, upstage cyclorama (white), side stage legs and over stage borders.

Backstage Areas

We have 4 Dressing rooms backstage that are fully wheelchair accessible. Dressing rooms 1 and 4 are larger capacity rooms, while Dressing rooms 2 and 3 have a reduced capacity but can double up as a production office. Maximum backstage capacity is **70 people** at any one time (For more information on backstage areas, please see the FOH policy document)

2 x Large Capacity Dressing rooms

1 x Male W/C

1 x Female W/C

1 x Disabled access W/C

1 x Washing machine

1 x Dryer

Sound

Desk and Speakers

Yamaha QL5 Desk
2x TIO, 16 In 8 Out Stage Box
4x Meyer CQ1 (2x flown, 2x on stage)
2x Meyer UPA 2P (Flown Centre cluster)
2x Meyer M11 700HP Bass Bin
4x Meyer USM 1P Monitors



Microphone Inventory

8 X SM 58	1 x Audio Technica AT2022
5 X SM 57	2 x Se Electronics 4400a
4 x Rode NT5	1 x Beta 57A
4 x Rode NTG1	1 x Audio Technica ATM250DE
2 x Crown PZM	4 x Pro signal MP33715
1 x Drum set mic Studio Spare	4 x The Bone HMC1
7 x mono DIs	

2 x Wireless Handheld Sennheisers available at additional charge

Playback

Macbook Pro - with Qlab 4

Projection

NEC NP-PA600XG

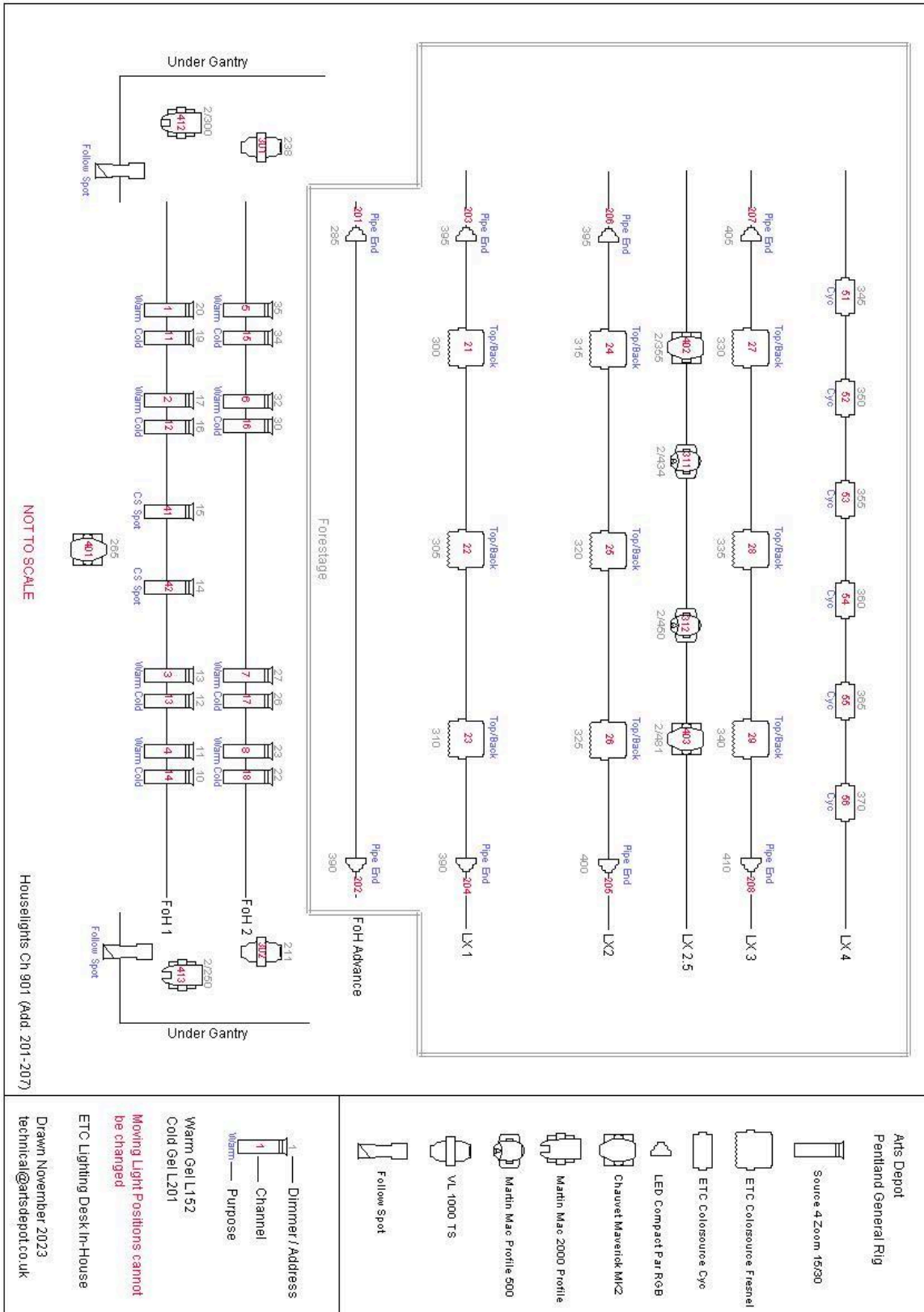
Brightness: 6,000 ANSI Lumens
Resolution: XGA (1024 x 768)
Contrast Ratio: 2000:1
Hor: 15-108 kHz Vert: 48-120kHz
Input: HDMI, VGA, BNC, RCA, Minidisplay

[Full Spec Here](#)



Projection point – cyclorama 22.96m

Lighting



General Rig

- 9 x ColorSource Spot LED with Fresnel Adapter
- 6 x ColorSource Cyc LED
- 3 x Chauvet Maverick MK2
- 2 x VL1000 TS
- 2 x Mac 2000 Profile
- 2 x Mac 500 Profile
- 8 x LED Compact par 18
- 18 x S4 zoom 15/30

Available Additional Stock (only if pre-arranged)

- 27 x Compact Fresnel 1.2k
- 4 x Cantata Fresnel 1.2k
- 4 x Cantata PC 1.2k
- 10 x Quartz 1/2k Fresnel
- 25 x S4 Junior 25/50
- 35 x S4 Zoom 15/30
- 10 x S4 19°
- 6 x S4 50°
- 6 x S4 26°
- 30 x Parcan Black (CP60, 61, + 62 lamps available)
- 5 x Parcan Chrome
- 4 x ParNEL
- 4 x Source4 Par (MFL)
- 1 x UV Cannon
- 10 x 1k Flood
- 4 x LED Showtec par
- 2 x LED Electrum tri 64 par
- 6 x LED Ultra hex par 3
- 4 x LED Slimline 7Q5
- 2 x Follow Spot - **Additional Charge and Requires Operators**

LX Control

ION lighting Desk 2 x 20 fader wing

160 x 15A Dimmers

9 x 25A Dimmers

26 x 15A Non-Dimmed Circuits

28 x DMX Outlets

House Light Dimmers can be controlled through the desk

Power

Single Phase

2 x 16 amp single phase, on follow spot galleries (Above auditorium left and right) Normally used for followspots

1 x 16 amp single phase, Front auditorium right on focusing gallery

Phase Power

32 amp power

1 x 32 amp 3 phase, over stage grid, stage left

63 amp power

1 x 63 amp 3 phase on winch gallery, stage left

125 amp power

2 x 125 amp 3 phase, situated stage-left, stage level

1 x 125 amp 3 phase, on focusing gallery, auditorium right

13A Locations

6 x on back wall of control room behind desks.

2 x Rear auditorium left

2 x Rear auditorium right

2 x Front auditorium right

2 x Down stage right

2 x Down stage left

2 x Front auditorium right on focussing gallery

2 x Rear auditorium right on focussing gallery

2 x Rear auditorium left on focussing gallery

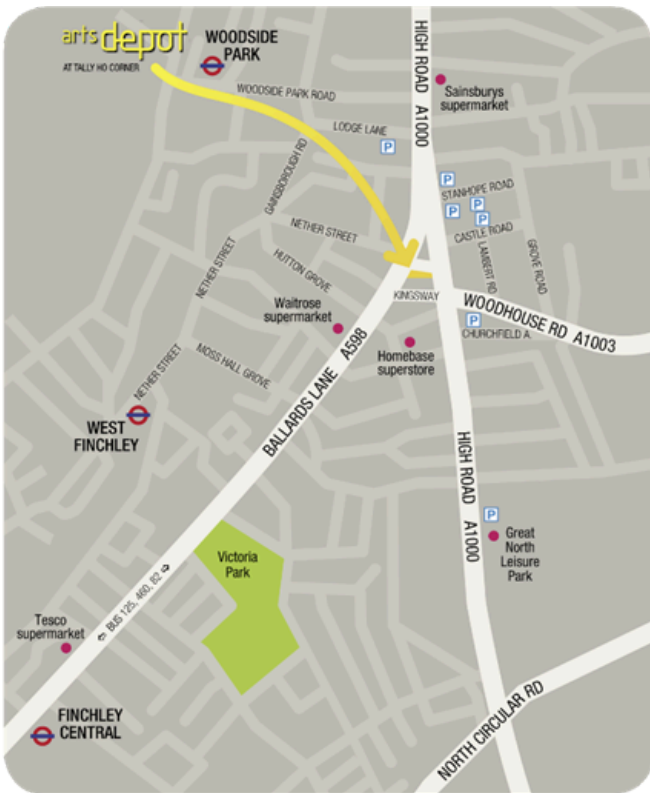
2 x Fly galley down stage

2 x Fly gallery up stage

2 x Winch gallery up stage

2 x Dimmer room

Access - Loading Bay



arts depot 5 Nether Street, Tally Ho Corner, North Finchley, London N12 0GA

What Three Words:

steep.solve.shunts - Entrance from Street
handy.agreed.piano - Loading Bay Gates

Access to Arts Depot Loading Bay is located on Nether Street. Turn right off High Road and then immediately left into the large Bus Depot entrance. Drive straight on and then look for the Arts Depot Loading Bay on the left hand side. This will be covered with locked gates. Pull up next to these gates and alert Box Office or Technical of your arrival. Please see pictures for more detail. We have a scenery lift that is 6.6m long, 3m wide, and 2.3m high – this has direct access to both theatres. The lift is located on a 1.2m raised concourse in the loading bay and we have a ramp to assist with unloading from vehicles. We often are able to offer some parking in the loading bay for the duration of your stay. Please contact the technical department for more information.

